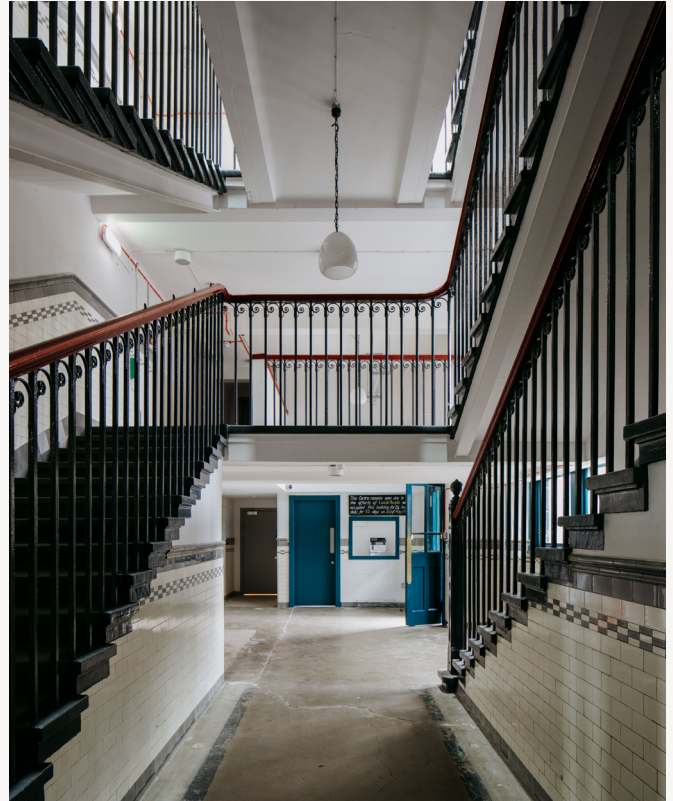


Case study: Refurbish - Kinning Park Complex



The Kinning Park Complex project is a clear example of how sensitive structural refurbishment can extend the life and usefulness of an existing community building while retaining its architectural and social value. Originally constructed in 1916 as an extension to Lambhill Street Primary School, the red sandstone building had evolved incrementally over the decades, accommodating a wide range of community, cultural and educational uses. Narro Associates was appointed to support a major redevelopment that would transform the building into a flexible, accessible, multi-use community hub while working with, rather than against, its historic structure.

Central to the project was a commitment to adaptive reuse and the retention of existing structural elements wherever possible. Structural interventions were carefully targeted to enable new uses across all three storeys without unnecessary replacement. A new

passenger lift shaft was introduced to provide level access throughout the building, requiring selective alteration of internal floors and walls while preserving the primary structural fabric. Within a double-height space, a new mezzanine floor was inserted to create additional office accommodation, designed to integrate with the existing structure and load paths.

The refurbishment also involved opening up previously compromised spaces by removing intrusive post-1950s interventions. This revealed the original double-helix stair and restored the clarity of the central atrium, allowing natural light from the existing rooflight to once again animate the heart of the building. These changes improved legibility, safety and accessibility while celebrating the original structural intent.

Where historic structural elements had deteriorated, Narro Associates prioritised repair and restoration

over replacement. Existing members were strengthened or repaired using compatible techniques, minimising the introduction of new materials and preserving the character of the building. Improvements to the external fabric, including repairs to stonework and upgraded windows and doors, further enhanced durability and performance.

Completed in 2022, the refurbished Kinning Park Complex has become a vibrant and inclusive community resource. Its recognition by the Royal Incorporation of Architects in Scotland in 2024 reflects the success of a structural refurbishment strategy rooted in reuse, restraint and long-term stewardship.

Structural Engineer: [Narro Associates](#)
Photos: Will Scott Photography